

# NEW FEMINISM

## MULTIPLE PERSPECTIVES SHARED SPACES

Building a more diverse art world  
through womens artists` participation

---

**JANA DETTMER**  
**LEONI | ΛΕΩΝΙ**  
**CORINNA ZIELEKE**

---

A NEW APPROACH

Beyond spectacle, stereotypes and narratives  
focused on ditinct artists perspectives

Reduced, abstract precise

A PLATFORM FOR NEW VISIBILITY

ARTFORUM HELLAS



## JANA DETTMER

With her concept “Spatial Art as Social Sculpture – Colour as System,” Jana Dettmer develops an artistic-architectural approach to public space. At its core is the question of how spaces can be consciously experienced. Her works are not decorative additions, but independent spatial systems. Precisely calibrated colour and geometric modules form structures that respond to light, scale, materiality, and spatial context. Rather than asserting themselves, her installations mediate: shaping perception, creating atmosphere, and offering orientation within complex environments. Her aim is to transform spaces – in dialogue with architecture and for those who inhabit them.

## LEONI | ΛΕΩΝΙ

The artist LEONI (Leoni A. Jäkel) works between Cologne and Leonidio in the Peloponnese. This bi-national context fundamentally shapes her practice. Her work unfolds between site-specific experience, abstract visual language, and social reflection. She combines the emotional intensity of the Greek landscape with a precise and reduced formal vocabulary and a strong sensitivity to atmosphere and light. Water and land emerge as central metaphors: water signifies movement, change, and emotion, while land represents grounding, boundaries, and belonging. Her works reflect an ongoing search for identity and position within a constantly shifting world and evolving cultural contexts.

## CORINNA ZIELEKE

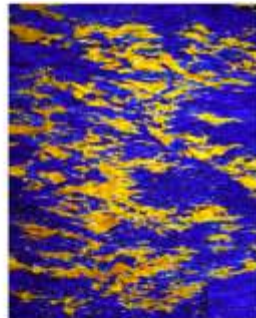
In times of global crisis, the idea of a “wonderful world” may seem almost contradictory – yet it is precisely for this reason that it matters. Artist and psychotherapist Corinna Zieleke approaches this idea not as utopia, but as a conscious counter-model. In her work, beauty is not an escape, but an expression of depth and inner orientation. The notion of “learning through beauty” runs throughout her practice. She invites viewers to rethink perception: a world that is not only fragile, but also complex, vibrant, and meaningful.

NEW FEMINISM

JANA DETTMER



LEONI | ΛΕΩΝΙ



CORINNA ZIELEKE



## IDEA

Artforum Hellas invites with New Feminism for a dialogue between perspectives. The female gaze expands perception and reflection and highlights the importance of diverse viewpoints for cultural and social development

- Not an activist program
- but a platform for visibility and exchange

Women artists such as Jana Dettmer, LEONI, and Corinna Zieleke exemplify a contemporary artistic practice in which female positions are no longer peripheral, but central to the development of visual and conceptual discourse. Their work reflects a shift toward autonomy, where individual perspectives on space, perception, and inner experience become defining elements of artistic production.

In different ways, all three artists expand the language of abstraction. Dettmer's spatial colour systems articulate environments as experiential structures, LEONI's work navigates between landscape, memory, and perception, while Zieleke explores beauty and sensibility as forms of cognitive and emotional orientation. Together, they demonstrate how abstraction can function not as formal reduction alone, but as a medium for relational and reflective inquiry.

This approach resonates with earlier positions in modern and post-war abstraction. Artists such as Helen Frankenthaler, Joan Mitchell, and Lee Krasner established abstraction as a field of subjective intensity and painterly autonomy, challenging dominant narratives and opening new possibilities for artistic expression. The contemporary practices of Dettmer, LEONI, and Zieleke can be understood as a continuation of this trajectory - less in terms of stylistic lineage than through a shared emphasis on process, perception, and the expansion of artistic agency.

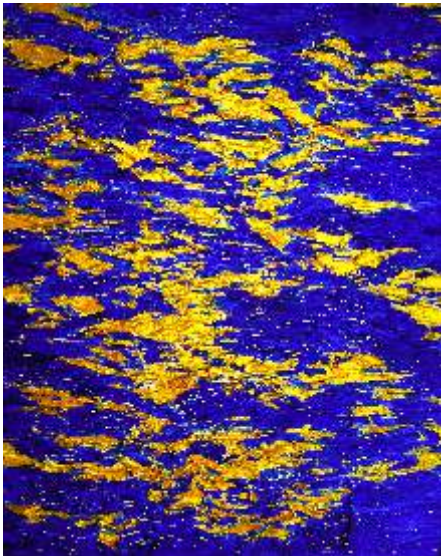
In this sense, the significance of women in art today lies not only in increased visibility, but in their capacity to redefine the terms of artistic engagement: through differentiated perspectives, sustained material inquiry, and a nuanced understanding of space, identity, and experience.

## NEW FEMINISM



Jana Dettmer. Red Connection top left | Square 17.24 top right  
Installation view from Modular Mixtures

NEW FEMINISM



LEONI. | ΛΕΩΝΙ

Planctonic I and II | Making the Invisible visible edition of 30 | Water Signs Edition of 30

**ARTFORUM HELLAS**



NEW FEMINISM



Corinna Zieleke Paintings mixed media (top) | The inne edge of the world 3 and 5 edition of 30

# NEW FEMINISM

## Πολλαπλές Οπτικές – Κοινός Χώρος

### ΠΡΩΤΟΒΟΥΛΙΑ

Πρωτοβουλία της *Artforum Culture Foundation Hellas* σε συνεργασία με την *Global Galleries*.

### ΚΑΛΛΙΤΕΧΝΕΣ

# JANA DETTMER LEONI | ΛΕΩΝΙ CORINNA ZIELEKE

### ΠΡΟΣΕΓΓΙΣΗ

Τρεις καλλιτέχνιδες με διαφορετικές διαδρομές εξερευνούν τη σχέση μεταξύ χώρου, φύσης και αντίληψης. Η δουλειά τους κινείται σε αφηρημένες μορφές, όπου το χρώμα, η δομή και η σύνθεση λειτουργούν ως αυτόνομα μέσα έκφρασης.

### ΙΔΕΑ

Το New Feminism δημιουργεί έναν χώρο διαλόγου και αναδεικνύει τη σημασία της πολλαπλότητας στη σύγχρονη καλλιτεχνική πρακτική.

→ Όχι ως ακτιβιστικό πρόγραμμα

→ αλλά ως **πλατφόρμα ορατότητας και ανταλλαγής**

Supported by

**WinterStiftung**  
Kunst Kultur Soziales Hamburg

**ARTFORUM**  
CULTURE FOUNDATION



© 2026 ArtForum Editions

Artforum Culture Foundation | Hellas A.M.K.E.  
artforumhellas.org info@artforumhellas.org

**ARTFORUM HELLAS**

